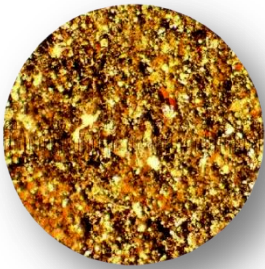


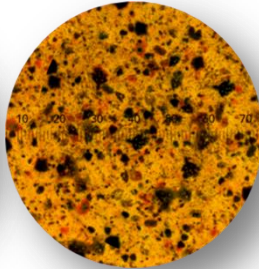
ČISTOTA OLEJA PODĽA NORMY ISO A NAS / OIL CLEANNESS



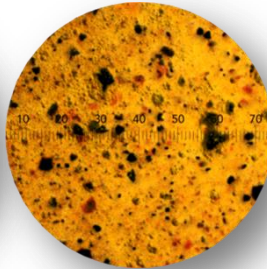
ISO nemerateľné
NAS > 12



ISO 23/21/18
NAS 12



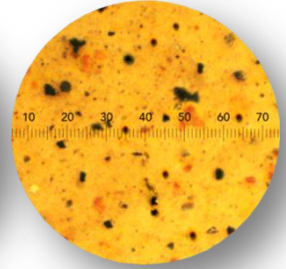
ISO 22/20/17
NAS 11



ISO 21/19/16
NAS 10



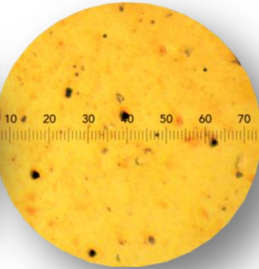
ISO 20/18/15
NAS 9



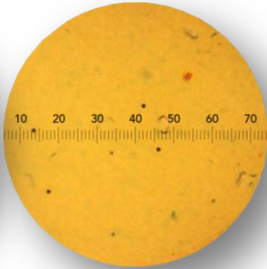
ISO 19/17/14
NAS 8



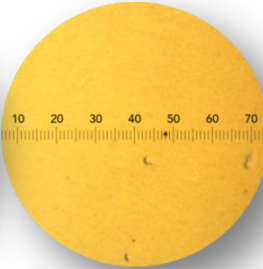
ISO 18/16/13
NAS 7



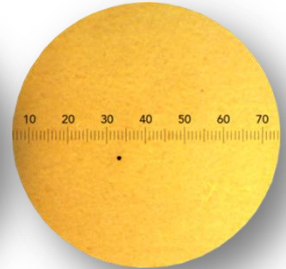
ISO 16/15/12
NAS 6



ISO 15/14/11
NAS 5

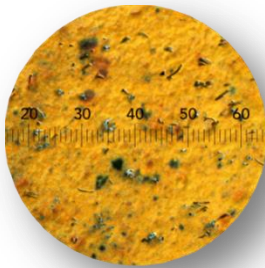


ISO 13/12/9
NAS 4

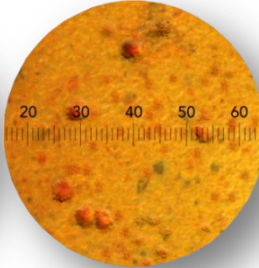


TYPY KONTAMINÁCIE OLEJA / TYPES OF OIL CONTAMINATION

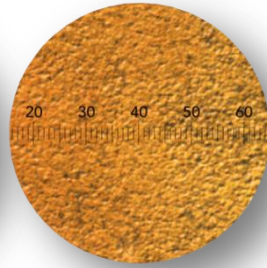
kovy
metals



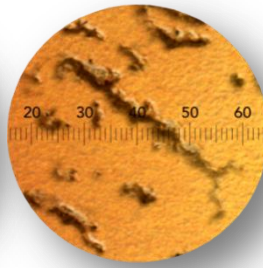
hrdza
rust



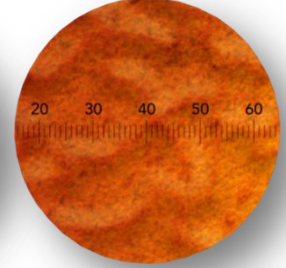
koláč jemných častíc
cake of fine particles



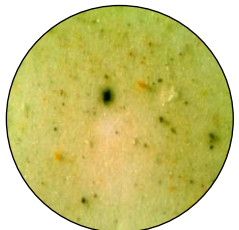
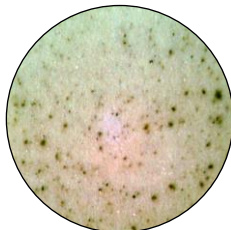
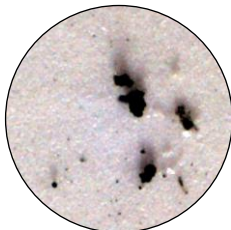
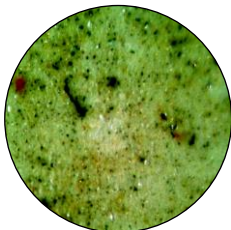
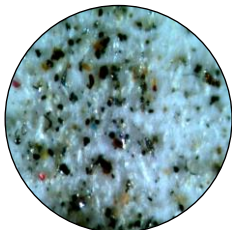
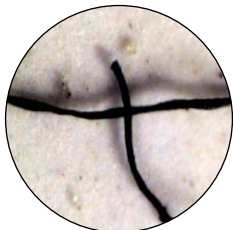
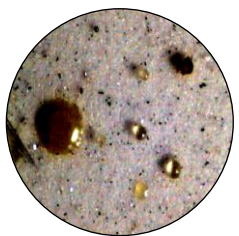
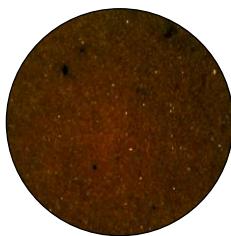
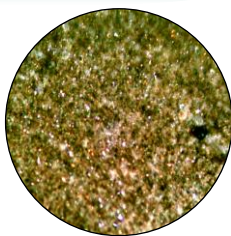
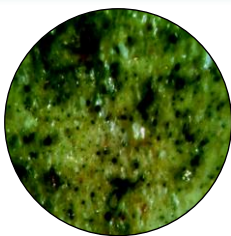
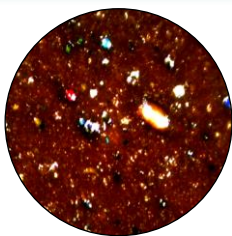
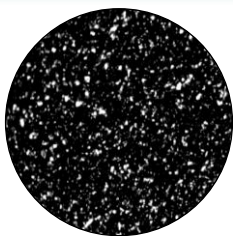
vlákna
fibres



živice
gel



VZORKY OLEJA Z PRAXE / OIL SAMPLES FROM PRAXIS



KÓDY ČISTOTY ISO 4406 / ISO 4406 CODES

Kódy normy ISO 4406 uvádzajú počet častíc väčších ako 4 μ m, 6 μ m a 14 μ m v 1ml oleja.

	Počet častíc na 1 ml oleja Číslo ISO kód	
	viac ako	až po a vrátane
22	20 000	40 000
21	10 000	20 000
20	5 000	10 000
19	2 500	5 000
18	1 300	2 500
17	640	1 300
16	320	640
15	160	320
14	80	160
13	40	80
12	20	40
11	10	20
10	5	10
09	2,5	5
08	1,3	2,5
07	0,64	1,3

Vzájomný prevodník ISO a NAS	
ISO 4406 (4 μ m/6 μ m/14 μ m)	NAS 1638
13 / 11 / 08	2
14 / 12 / 09	3
15 / 13 / 10	4
16 / 14 / 09	
16 / 14 / 11	5
17 / 15 / 09	
17 / 15 / 10	
17 / 15 / 12	6
18 / 16 / 10	
18 / 16 / 11	
18 / 16 / 13	7
19 / 17 / 11	
19 / 17 / 14	8
20 / 18 / 12	
20 / 18 / 13	
20 / 18 / 15	9
21 / 19 / 13	
21 / 19 / 16	10
22 / 20 / 13	
22 / 20 / 17	11
23 / 21 / 14	
23 / 21 / 18	12
24 / 22 / 15	
25 / 23 / 17	

KÓDY ČISTOTY NAS 1638 / NAS 1638 CODES



Kód normy NAS 1638 sa udáva ako jedno výsledné číslo, pre najväčší nameraný počet častíc z daných veľkostných intervalov.

Veľkostný rozsah	5-15 μ m	15-25 μ m	25-50 μ m	50-100 μ m	> 100 μ m	mg/l	
NAS triedy (triedenie podľa maximálnej kontaminácie častíc na 100ml oleja)	00	125	22	4	1	0	-
	0	250	44	8	2	0	0,001
	1	500	89	16	3	1	-
	2	1 000	178	32	6	1	-
	3	2 000	256	63	11	2	-
	4	4 000	712	126	22	4	0,1
	5	8 000	1 425	253	45	8	-
	6	16 000	2 850	506	90	16	0,2
	7	32 000	5 700	1 012	180	32	0,5
	8	64 000	11 400	2 025	360	64	1
	9	128 000	22 800	4 050	720	128	3
	10	256 000	45 600	8 100	1440	256	5
	11	512 000	91 000	16 200	2880	512	7-10
12	1 024 000	182 400	32 400	5760	1024	20	